

State and National Health Advisories

CDC Health Alert

- 10-28-24 update: [Disruptions in Availability of Peritoneal Dialysis and Intravenous Solutions from Baxter International Facility in North Carolina](#)
- 10-3-24 [First Marburg Virus Disease Outbreak in the Republic of Rwanda](#)

NYS Department of Health Advisories

- 10-9-24: [Supply Chain Disruption and Conservation Strategies Following Closure of Baxter Plant](#) (For Long term care providers and agencies)

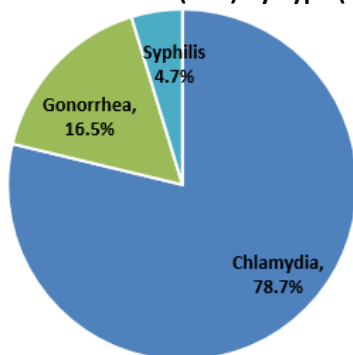
FDA News Release

October 7th—FDA authorized marketing of the first home Flu (Type A & B) and COVID-19 combination test outside of an applicable emergency use declaration/ authorization. Other home flu/COVID tests are currently available under emergency use authorization. [Click here to read more.](#)

Communicable Disease Activity in Madison County, January - October 2024

Communicable diseases are spread person to person or from an animal, surface or food to a person. Timely reporting of communicable diseases helps public health identify newly emerging infections, detect outbreaks, prevent secondary transmission, monitor trends, and evaluate the effectiveness of control measures.

Percentage of Confirmed Cases of Sexually Transmitted Infections (STIs) by Type (n= 127)



Percentage of Confirmed Cases of Communicable Cases by Type (n=459) *excludes STIs

Communicable Disease:	% of Confirmed Cases:	Trend Compared to Previous Season:
Lyme Disease	67.1%	↓
Hepatitis C Chronic	9.8%	↑
Anaplasmosis	3.7%	↑
Campylobacter	2.6%	↑
Giardiasis	2.2%	↑
Confirmed Cases:	459	↑

↑ = Rate Increasing

↔ = Rate Stable

↓ = Rate Decreasing

- Lyme disease continues to be the most common reportable communicable disease among Madison County residents (67.1%), followed by Chronic Hepatitis C (9.8%), Anaplasmosis (3.7%), Campylobacter (2.6%), and Giardiasis (2.2%).
- Chlamydia remains the most prevalent sexually transmitted infection (78.7%).

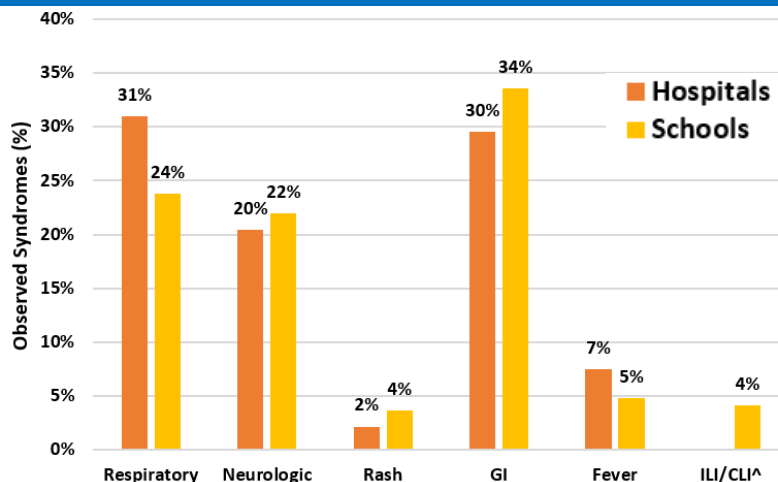
Top 5 Syndromes Observed by Hospitals Emergency Departments in Madison County, October 2024

Syndromic surveillance is used to monitor disease indicators in near real-time to detect information about symptoms during early phases of illness and indicate outbreaks of disease earlier than would otherwise be possible with other public health methods.

- The top reported syndromes from hospital emergency departments and schools in October were gastrointestinal (GI), respiratory and neurologic.
- The most prevalent syndrome in hospitals and schools were GI syndromes.

*Data reported as percent of total syndromes observed

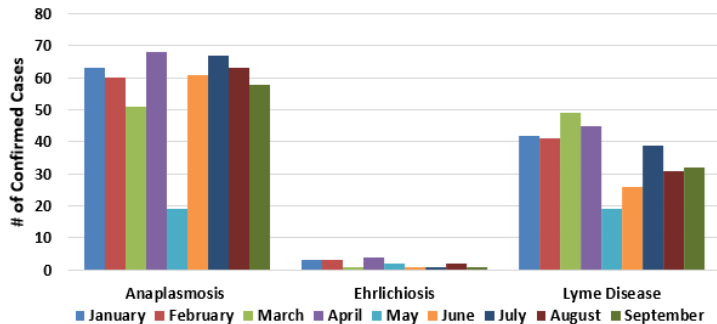
^ Tracked by schools only



Animal Surveillance in Madison County

Sentinel animal surveillance helps detect risks to human health by providing early warning of a potential concern. The data although not representative of all cases, is used to improve understanding of local disease activity. Each month six local veterinary offices are surveyed; responses are voluntary, the number of offices responding by month varies, and the data is preliminary.

Local Veterinarian Zoonotic Disease Reporting,
January - September 2024



Among Veterinarians reporting in 2024, cases of Lyme declined by 26.2% since January while cases of Anaplasmosis declined by 7.9% since January.

Most new or emerging infectious diseases spread from animals to people – called **zoonotic diseases**. Animal surveillance acts as an early warning of potential human illness. Rabies is a zoonotic disease we closely monitor.

Rabies Surveillance	September 20-October 24, 2024	2024 Summary
Animal Specimens Tested	4 (1 feral cat)	38
Animal Bites	19 (13 dogs, 6 cats)	159 (123 dogs, 36 cats)
Animal Specimens Testing Positive for Rabies	1 (feral cat)	4 (1 woodchuck, 2 bats, and 1 feral cat)
Individuals Authorized for Rabies Post-Exposure Prophylaxis (RPEP)	2	43

Mosquito Surveillance in Madison County

Mosquitoes pools from the Town of Sullivan are collected and submitted weekly for testing to detect mosquito-borne diseases that may pose a threat to human health. The two primary diseases of local concern are Eastern Equine Encephalitis (EEE) and West Nile Virus (WNV).

A **mosquito pool** is the collection of 10–50 mosquitoes of the same species.

Madison County Seasonal Summary as of 10/4/2024:

- Eastern Equine Encephalitis (EEE) virus detected in one horse.
- One mosquito pool detected West Nile Virus (WNV).
- Four mosquito pools detected Flander's Virus (FV), one mosquito pool detected Jamestown Canyon Virus (JCV), one pool detected Highland J Virus (HJV), and one pool detected Highland J Virus (HJV) and Flander's Virus (FV).

*Current year surveillance data through 10/4/2024

	# of Mosquitoes Collected	# of Mosquito Pools Submitted
2021	10,617	151
2022	20,982	144
2023	24,089	210
2024*	26,894	183

Comparing the three-year average from the same time period, the 2024 season has collected 40% higher mosquitoes, refer to the table above.

EEE Surveillance in New York State

2024 mosquito surveillance, as of October 12th:

- 44 mosquito pools tested positive in four counties (Onondaga, Oswego, Orange, Suffolk)- 0.8% positivity rate
- 21 horses tested positive across 12 counties
- Two ratites (flightless birds) tested positive in Rensselaer
- One human case in Ulster County.

[Click here to read the full State report.](#)

H5N1 Bird Flu: [Current U.S. Situation](#)

Dairy cattle: [Ongoing multi-state outbreak](#)

Wild birds: [Widespread](#)

Poultry flocks: [Sporadic outbreaks](#)

Mammals: [Sporadic infections](#)

Person-to-person spread: None

Exposure sources: cattle—20 cases, poultry—18 cases, and one case the source is unknown

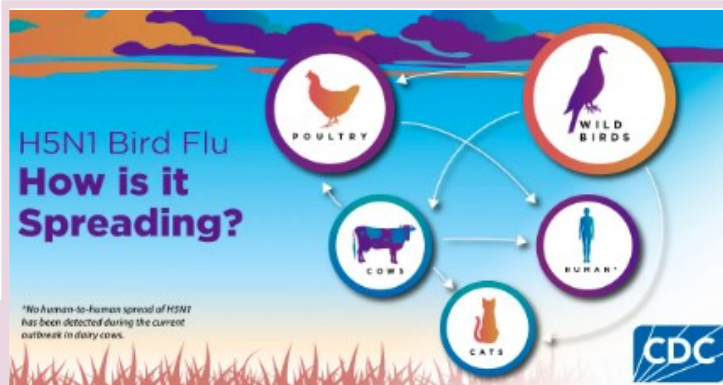
Human Cases in 2024: 39 from six states* (No cases in NYS)

Public Health Risk: Low

10-30-24: First H5N1 Detections in Swine

[Click here to read more.](#)

There is no concern about the safety of the nation's pork supply as a result of this finding.



COVID-19 Wastewater Surveillance

Why test wastewater? May serve as an early warning indicator for increases in disease. Trend values are based on participating Wastewater Treatment Plants (WWTP) with two data points over a 15-day period. View the statewide report at: <https://coronavirus.health.ny.gov/covid-19-wastewater-surveillance>.

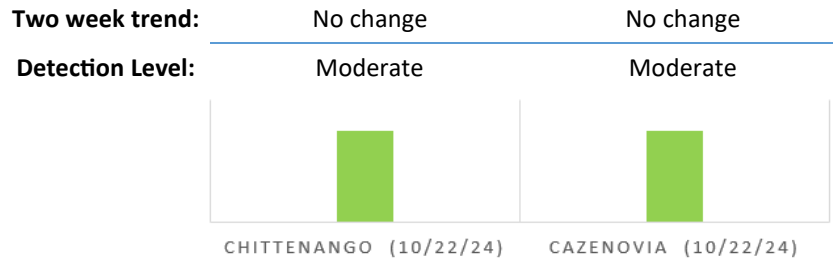
COVID-19 Wastewater Detection Level, Across NYS

Data as of October 31, 2024

High (75%-100%)	7
High (50%-75%)	9
High (25%-50%)	15
High (0%-25%)	34
Moderate	94
Low	1
NA	13
Total Sewersheds	173

COVID-19 Wastewater Detection Level, Madison County

Data as of October 31, 2024 (Last sample date available below)



Note: High detection levels correlate with more than 50 cases, moderate levels correlate with about 10-50 cases, and low levels correlate with about 10 cases per 100,000 population in the past week. High levels are further broken down by quantiles based on historical data.

Health Highlight: Holiday Food Safety Tips

Raw meat and its juice can contain foodborne germs. Follow these tips to thaw, cook, and handle meat to prevent food poisoning.

- Wash your hands thoroughly with soap and water immediately after handling raw meat and its juice
- Clean and sanitize surfaces that touch food
- Thaw large cuts of meat such as a whole turkey, in the fridge and not on the counter
- Avoid cross contamination by using separate cutting boards and utensils for raw meats and ready to eat food
- Keep hot foods hot and cold foods cold. Keep hot foods at 140° F or higher and keep cold foods cold at 45°F or below
- Use utensils to avoid bare hand contact with food after it is cooked
- Cook foods thoroughly to the following internal temperatures:

Poultry and left overs: 165°	Pork: 145°
Ground Beef: 160°	Beef: 140°

WARNING: Food left out at room temperature for longer than 2 hours is no longer safe to eat.

Thaw a Turkey in Your Refrigerator

Weight	Days to Thaw
4-12 lbs	1-3 days
12-16 lbs	3-4 days
16-20 lbs	4-5 days
20-24 lbs	5-6 days

Get more safe thawing tips from the FDA at: <https://bit.ly/FDASafeTurkeyThaw>

Immunization Clinics by Appointment

Offering most routine immunizations and monkeypox/mpox (JYNNEOS).

Call 315-366-2361, option 2 for appointments and vaccine availability.

- Wednesday, November 6, 9 to 11:30 am
- Tuesday, November 19, 1 to 3:30 pm
- Wednesday, December 4, 1 to 3:30 pm
- Friday, December 20, 9 to 11:30 am

Location: Madison County Public Health, 138 N Court St Building 5, Wampsville

[CLICK TO DOWNLOAD CLINIC FLYER!](#)
(Available in Spanish!)

DID YOU KNOW?
1 out of 3 American Adults Have Prediabetes

Food Safety Inspections

Inspections are a tool to provide education and identify steps to fix and reduce the risk of food-borne illness. View inspection results: <https://www.madisoncounty.ny.gov/453/Food-Inspection-Results>

- In September 2024, 38 food service inspections completed by Madison County Public Health were satisfactory; and 7 were unsatisfactory.

Diabetes Prevention Program

12 month-free virtual program on Zoom starting: 11/15/24

Invest in Your Health. Register Today!

call: (315) 313-4399
email: henry.s@mcruralhealthcouncil.org

There is no cost to join, just your commitment (\$500 value).