

## HEALTH IN THE NEWS / ADVISORIES

**December 2** [NYSDOH declares Flu Prevalent in the State, Regulation Goes into Effect](#)

**December 1** New York State Department of Health Health Advisory (NYSDOH): [Illnesses Linked To Do-It-Yourself Injection of Botulinum Toxin From Unlicensed Sources](#) (also read the [MMWR Morbidity and Mortality Weekly Report 2-25; 74: 593-596](#))

**November 25** NYSDOH Health Advisory: [FALSE CLAIM LINKING VACCINES TO AUTISM SPECTRUM DISORDER](#)

**November 20** [Statement on Vaccine Safety from the New York State Health and Supported by New York State Office for People With Developmental Disabilities Commissioner](#)



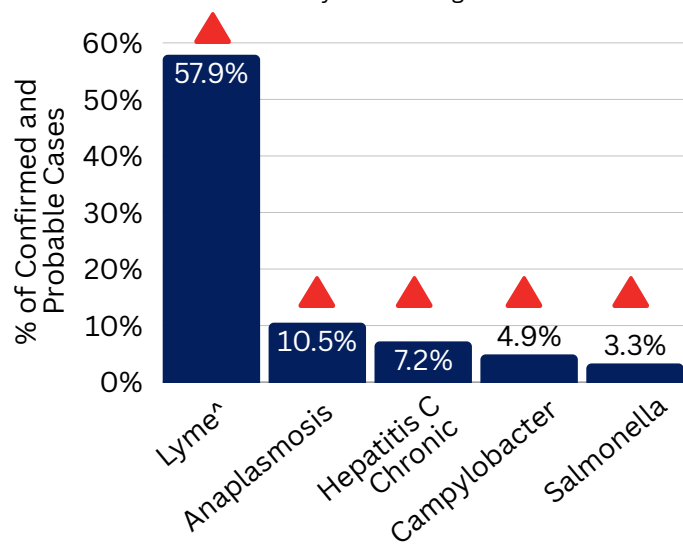
See this icon?  
Click for more  
data

## COMMUNICABLE DISEASE ACTIVITY IN MADISON COUNTY, JANUARY-NOVEMBER 2025

### General Communicable Diseases

Madison County, January to November 2025, N=390 (excludes STI cases)

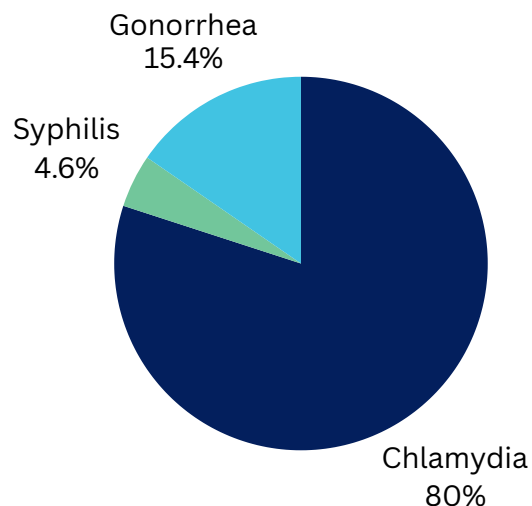
<sup>a</sup>Lyme disease case numbers are preliminary and subject to change.



The total number of communicable diseases (excluding STIs) in 2025 **increased** compared to 2024 for the same time period.

### Sexually Transmitted Infections (STIs)




Madison County, January to November 2025, N= 130



The total number of STIs in 2025 **decreased** compared to 2024 for the same time period.



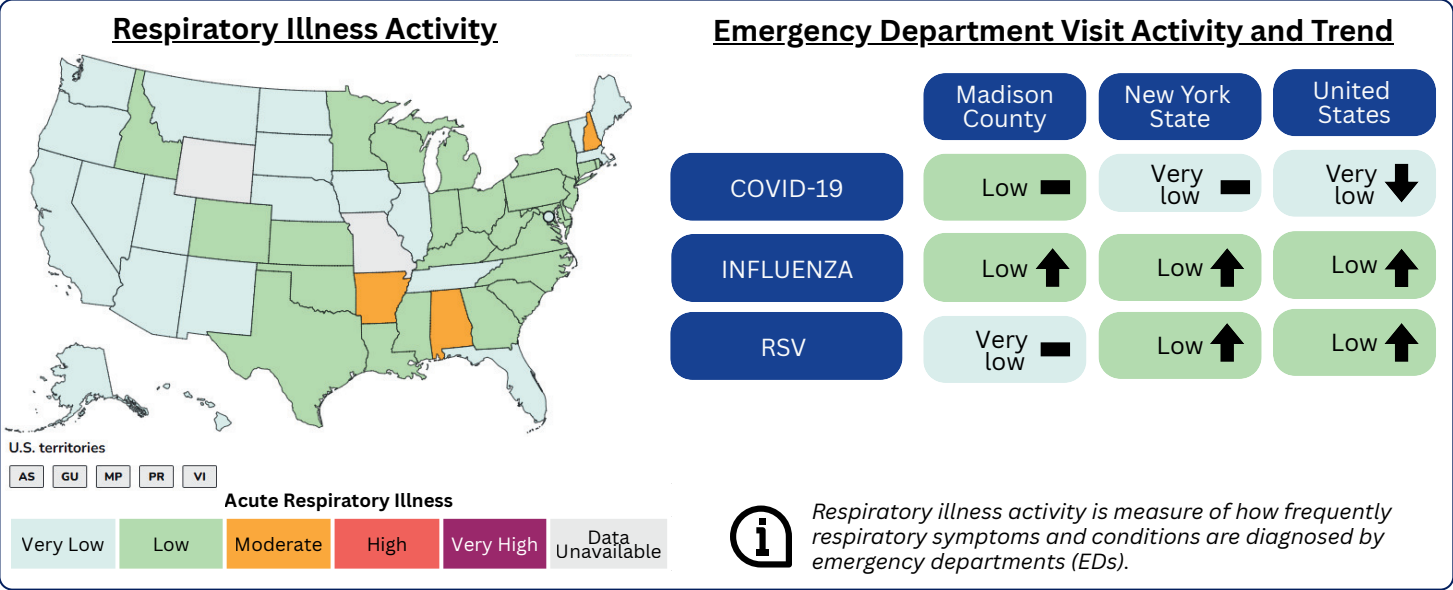
From January thru November 2025, **chlamydia** was responsible for 80.5% of STI cases in Madison County.

**Trend Compared to 2024 YTD:**  rate increase  rate stable  rate decrease

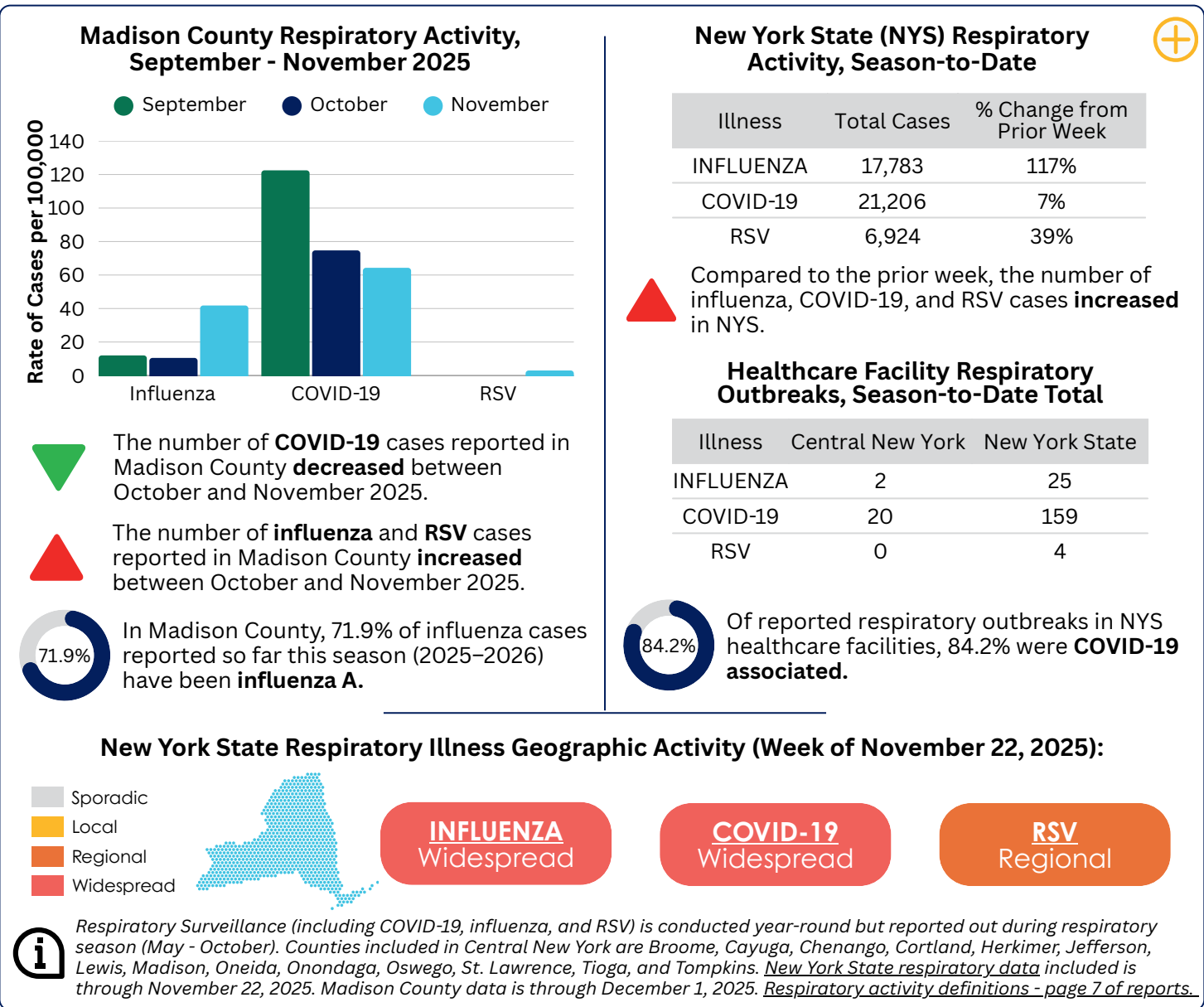


**Communicable diseases** are spread person to person or from an animal, surface or food to a person. Timely reporting and monitoring helps public health identify newly emerging infections, detect outbreaks, prevent secondary spread, watch trends, and evaluate the effectiveness of control measures to provide updated actions.

NATIONAL RESPIRATORY ACTIVITY\*



LOCAL AND STATE RESPIRATORY ACTIVITY\*



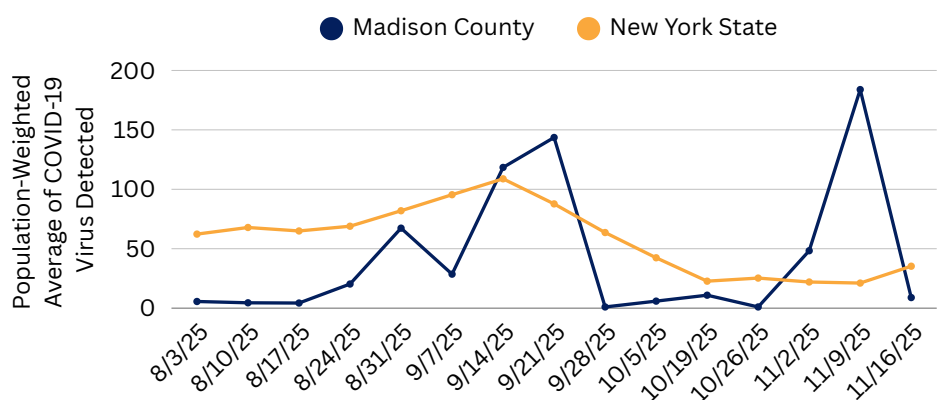
## COVID-19 WASTEWATER SURVEILLANCE

### COVID-19 Detection Levels in New York State Sewersheds

Data as of 11/20/2025

	COVID-19 Detection Level
Low	62
Moderate	65
High	13
Very High	5
NA	29
<b>Total Sewersheds</b>	<b>174</b>

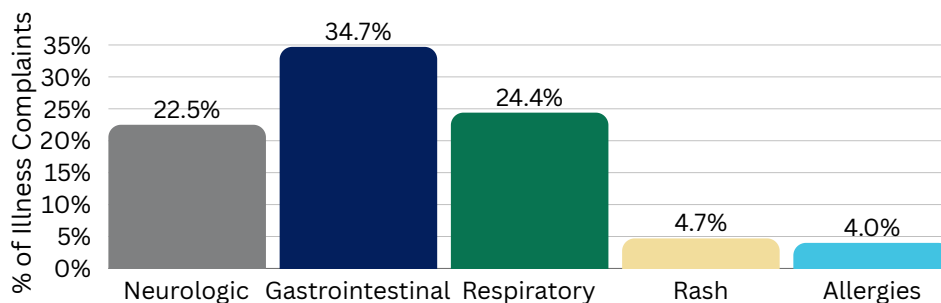
### Population-Weighted COVID-19 Wastewater Trends, August - November 2025



**i** Wastewater surveillance is a tool to monitor viruses and bacteria and help predict trends within a community. It can be used to track the spread of respiratory illnesses (COVID-19 and influenza) and vaccine preventable diseases (polio and measles). The COVID-19 virus may be detected in wastewater as many as three to seven days before increases in the percentages of people who test positive or are hospitalized with COVID-19.

## ILLNESS COMPLAINTS OBSERVED BY K-12 SCHOOLS IN MADISON COUNTY

### Top 5 Illness Complaints Observed in K-12 Schools, Madison County, November 2025



Top 5 Round-up of Illness Complaints for November:

1. Gastrointestinal (**34.7%**)
2. Respiratory (**24.4%**)
3. Neurologic (**22.5%**)
4. Rash (**4.7%**)
5. Allergies (**4%**)

**i** Syndromic surveillance monitors disease indicators in near real-time to detect information about symptoms during early phases of illness and indicate outbreaks of disease earlier than other public health methods. Data from K-12 Schools are reported as a percentage of the total syndromes observed.

## HIGHLIGHT: STAY HOME WHEN SICK RECOMMENDATIONS

Seasonal respiratory illnesses like flu, RSV, and COVID-19 are increasing in our community. Staying home when symptomatic is one of the most effective ways to reduce disease spread in workplaces, schools, and households.

#### When to Stay Home from Work/School:

- Fever (100.4°F or higher)
- Chills, sore throat, body aches, fatigue
- Nausea, vomiting, or new cough

#### When to Return to Work/School:

- Fever-free for 24 hours without medication,
- Symptoms have improved, and
- Gastrointestinal issues have resolved.

#### Tips to Prevent Illness:

- Wash hands often
- Cover coughs/sneezes with your arm or tissue
- Clean frequently touched surfaces
- Avoid touching your face
- Stay up to date on seasonal respiratory virus vaccines
  - [Learn about vaccines available and eligibility.](#)

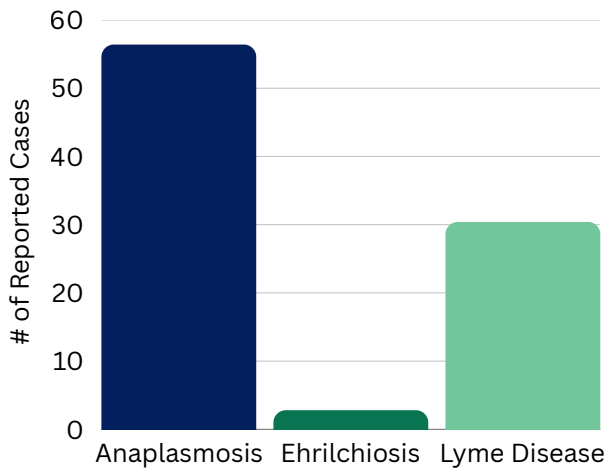


Staying home when sick protects others, limits outbreaks, and helps keep schools and workplaces running strong and healthy. [Learn more to prevent the spread of respiratory viruses when you're sick](#)

## ANIMAL SURVEILLANCE IN MADISON COUNTY

### Local Veterinarian Zoonotic Reporting

Average Number of Reports, Madison County, January to October 2025



### Madison County Rabies Data

Oct. 23 thru Nov. 20, 2025

2025 Summary

Animal Bites	10 (10 dogs)	125 (101 dogs, 23 cats, 1 other)
Animal Specimens Tested	4 (3 bats, 1 feral cat)	35
Animal Specimens Positive for Rabies	1 (feral cat)	6 (3 raccoons, 1 skunk, 1 deer, 1 feral cat)
Individuals Authorized for Rabies Post-Exposure Prophylaxis (RPEP)	2	30



Most new or emerging infectious diseases spread from animals to people, called zoonotic diseases. Animal surveillance is an early warning of potential human illness. Rabies is one example of a zoonotic disease we closely monitor. To improve local surveillance, veterinary offices are surveyed monthly. Responses are voluntary, the number of month responses varies, and data is preliminary.

Among reporting veterinarians, January-October 2024 and 2025:



**Lyme Disease:** Average monthly reported cases in 2025 were 15.6% fewer than in 2024.



**Anaplasmosis:** Average monthly reported cases in 2025 were 0.5% fewer than in 2024.



**Ehrlichiosis:** Average monthly reported cases in 2025 were 40% higher than in 2024.

## CONSUMER ALERT/RECALLS



ByHeart Infant formula in all sizes and pouches, have been recalled due to potential botulism contamination. Botulism is a rare but serious illness.

- Read the [full FDA recall](#) and learn more from the CDC about this [infant botulism outbreak](#).

**Recommendations:** Throw affected product away immediately and, if a child has symptoms, record the information on the package before discarding. Providers should report suspect botulism cases to the local health department of the patient's county of residence immediately.

## IMMUNIZATION CLINICS

Call 315-366-2361, option 2 for appointments & vaccine availability.

**Location:**

Madison County Public Health  
138 N. Court St, Building 5, Wampsville



**Clinic Dates:**

- Monday, December 8 1 PM - 3:30 PM
- Tuesday, December 30 9 AM - 11:30 PM

## FOOD SERVICE INSPECTIONS

In October 2025, of 58 food service inspections conducted, 49 were satisfactory and 9 were unsatisfactory.

- [View Madison County inspection results.](#)



Inspections are tool to identify safety and sanitary measures to reduce the risk of food-borne illness. A critical violation poses an imminent health threat. A non-critical violation does not immediately endanger human life but if not fixed, could pose a health threat.

\*NYS Respiratory activity as of November 22, 2025



NYSDOH Commissioner and state experts review the data and concerns with declining COVID-19 vaccination rates. **Watch the video.** (25 minutes)