

# Disease Surveillance & Risk Report

No Report

No Activity

Sporadic

Local

Regional

Widespread

Severe

## DEFINITION of Influenza-like or Flu-Like Illness: (ILI):

1) Fever > 100°F measured with a thermometer AND (2) Cough AND/OR sore throat in the absence of a known cause other than influenza

### Madison County Flu Activity, week ending 12/23/17

#### Flu Activity: Regional

Weekly Lab-confirmed flu: 13 cases (6 flu Type A and 7 flu Type B) were reported, a 160% increase from the previous week.

Total lab-confirmed flu cases reported to date: 27 (14 flu Type A and 13 flu Type B)—this is 42% lower than average to date.

**Incidence rate:**  
17.7 per 100,000 population

Schools Districts\*: Schools did not report this week

College Health Centers\*: No report due to the holiday break

Primary Care Providers\*: ILI and flu were reported

Hospitals: ILI and flu were reported

New York State Hospital Report (HERDS): One flu related hospitalizations was reported by a hospital in Madison County; for a total of two reports this season to date

Flu-Associated Pediatric Deaths: No reports season to date

*\*Information denoted with an asterisk is subjective and provided on a voluntary basis.*

[View all past surveillance reports online at www.healthymadisoncounty.org](http://www.healthymadisoncounty.org)

### Madison County Disease Surveillance Updates, week ending 12/23/17

Communicable Diseases Reported to the Health Department: 5 chlamydia, 1 gonorrhea, 1 cryptosporidiosis, 2 pertussis, 1 aseptic meningitis, and 1 new chronic hepatitis C

#### Primary Care Providers Reported\*:

Fever, respiratory illness, upper respiratory illness (URI), sinus infections, influenza-like illness (ILI), flu, respiratory syncytial virus (RSV), sore throats, strep throat, coughs, and colds; see graph.

#### Hospitals Reported\*:

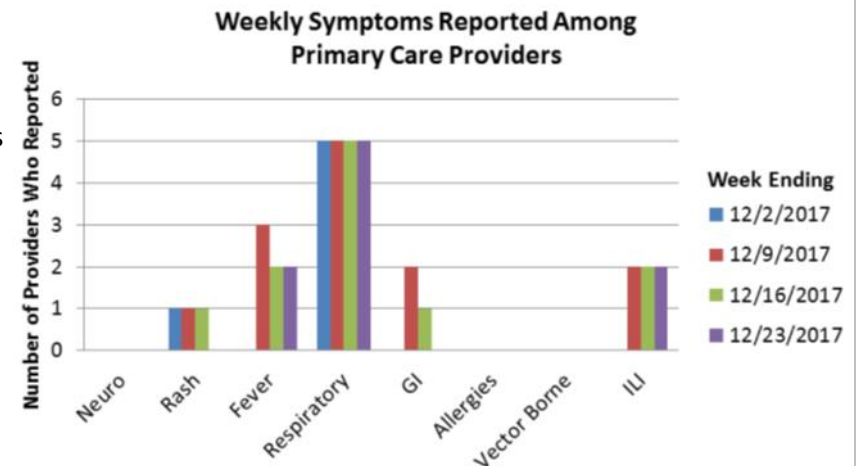
Rash, fever, gastrointestinal illness (GI), respiratory illness, URI, ILI, flu, pneumonia, strep throat, and asthma exacerbations

College Health Centers\*: No report due to the holiday break

Syndromic Surveillance in Emergency Department—12/17/17 to 12/26/17: No reports

Medicaid Over-the-Counter (OTC) & Script Medication Alerts—12/3/17 to 12/12/17:

Mild/moderate sensitivity for 1st and 2nd Generation Cephalosporins (antibiotics)



# Disease Surveillance & Risk Report

No Report

No Activity

Sporadic

Local

Regional

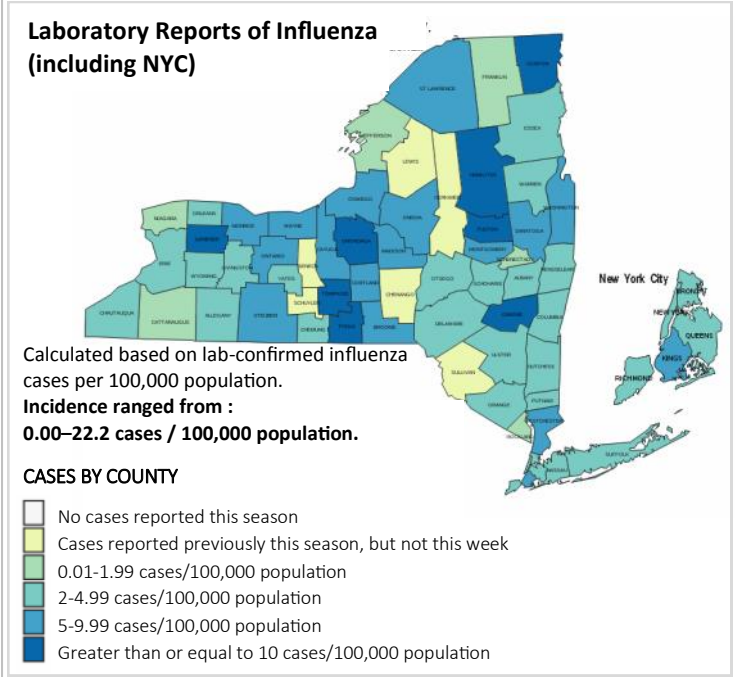
Widespread

Severe

## New York State Flu Activity

### Flu Activity for the week ending 12/16/17: **Regional**

- Lab-Confirmed Flu: 892 reports, a 56% *increase* over last week. Flu was reported in 56 counties.
- Flu-Related Hospitalizations: 269 reports, a 42% *increase* over last week.
- ILnet Healthcare Providers: 2.89% of patient complaints were flu-like illness (ILI) ; this is *below* the regional baseline of 3.10%. (*ILnet providers* report the total number of patients seen and the total number of those with complaints of influenza-like illness (ILI) weekly in an outpatient setting.)
- Flu-Associated Pediatric Deaths: No report this week. No deaths have been reported this season.



Source: New York State Department of Health. *Influenza Surveillance, Activity and Reports, 2015-16.* <http://on.ny.gov/1GTxdpF>

## United States Flu Activity

### Flu Activity for the week ending 12/16/17 (week 50): **Regional** (Flu activity increased slightly in the U.S.)

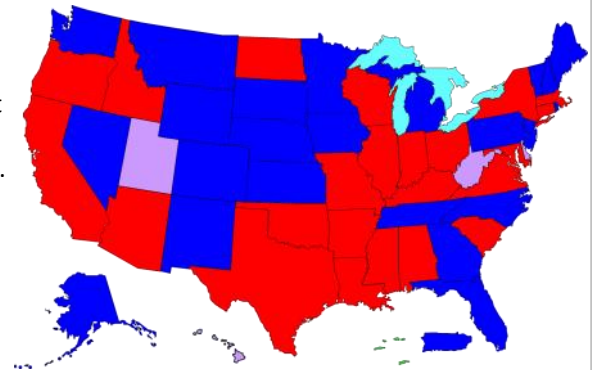
#### Geographic Flu Activity Summary:

- **Widespread** influenza activity was reported by 23 states
- **Regional** influenza activity was reported by Puerto Rico and 23 states
- **Local** influenza activity was reported by the District of Columbia and four states
- **Sporadic** influenza activity was reported by the U.S. Virgin Islands; and Guam did not report.

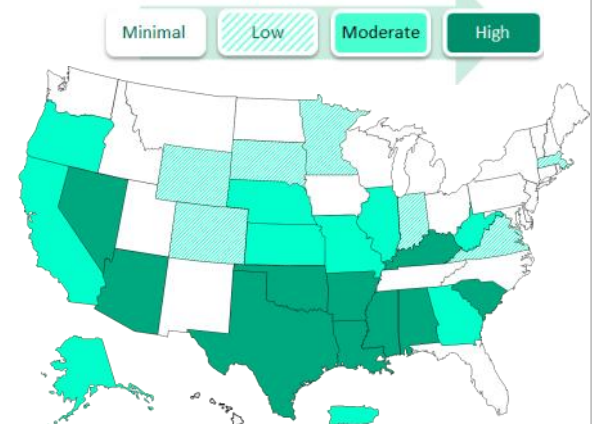
#### Surveillance Summary:

- Ten states experienced high activity; Puerto Rico and eight states experienced moderate ILI activity; New York City, the District of Columbia, and 11 states experienced low ILI activity; and 21 states experienced minimal ILI activity
- 6.2% of all deaths reported through the National Center for Health Statistics mortality surveillance data occurring during week 48 ending 12/2, were attributed to pneumonia and flu; this is *below* the week 48 epidemic threshold of 7.4%.
- Outpatient illness visits reported through the U.S. ILI Network was 3.5%, this percentage is *above* the national baseline of 2.2%. Nine of 10 regions in the U.S. reported flu-like illness *at or above* their region-specific baselines.
- One flu-associated pediatric death was reported during week 50. Nine flu-associated deaths have been reported this season to date.

**Figure 1:** Geographic Spread of Influenza as Assessed by State and Territorial Epidemiologists (This figure does not measure the severity of influenza activity.)



**Figure 2:** ILI Activity from ILINet Data



ILI Net Data based on percent of outpatient visits in states due to ILI, more on Fig. 2 at: <http://1.usa.gov/1d3PGtv>

Sources: FluView: Weekly U.S. Influenza and Surveillance Report. Centers for Disease Control and Prevention. <http://1.usa.gov/1eDDFhh>