

Madison County's Building Program

Artistic blending of the old with the new greets visitors of today to the Madison County village of Wampsville since recent completion of a \$2.5 million dollar building and renovation program.

Flanking the historic silver-domed Madison County Courthouse is a new 60,000 square foot County Office Building and a new 15,000 square foot Social Services Building.

The Courthouse itself has been completely renovated and with improvements made at the nearby County Jail and construction of a new 35,000 square foot County Highway Garage in 1967 to replace one destroyed by fire, "everything's up to date in Kansas City."

Through 30 year construction bonds sold at 4.67% interest in April, 1968 and through borrowing on renovations to be amortized over a 15 year period, the Board of Supervisors has provided the space and the facilities to meet its needs for the next two decades.

Located between the sprawling urban centers of Syracuse and Onondaga County on the West and Utica and Oneida County on the east, Madison County's current population of 60,000 is projected to grow to 81,000 by 1980.

Crowded into limited quarters at the Courthouse and faced with expanding departmental space needs, the County embarked on its building program in 1965 when it contracted with Duffy Inc. space engineering firm of New York City to study county needs.

Their 1966 report indicated that the Courthouse square footage of 28,558 feet was grossly inadequate despite rented facilities for Social Service and Health agencies in nearby Hamilton and Oneida.

The firm said a minimum of 68,000 square feet would be needed by 1975.

The Supervisors then engaged the Hueber, Hares and Glavin architectural partnership in Syracuse to begin preliminary building sketches and soil tests.



County Office Building Entrance

This firm was working with the County on design of the 35,000 square foot, \$435,000 highway garage to replace one destroyed by fire in February, 1966.

The architects were advised to seek the most practical of all alternatives available, not necessarily the cheapest of materials. The final concept called for relocation of the County Social Services Department from Hamilton to Wampsville in a 15,000 square foot, two story brick building of its own and construction of a new three story County Office Building. It further suggested complete renovation of the existing Courthouse as a Judicial Center.

Building bids were sought in early 1968 and surprised many persons by staying within the architectural estimate of \$2 million dollars. Later another \$500,000 was made available to permit renovation of the Courthouse.

Construction costs for the Social Services Building were about \$16 per square foot and about \$28 per square foot for the Office Building. A \$76,000 reimbursement was realized through a Civil Defense Center located in the basement of the Office Building.

Groundbreaking was held on March 22, 1968 with County Clerk Arnold Fisher named as building coordinator; Michael McCarthy of Oneida as Clerk of the Works, and Murray Walters, Inc. of Binghamton as General Contractor for both buildings.

The contractor was asked to concentrate first on the Social Services Building and this was completed in January, 1969 with the Department occupying the building in February, 1969.

There are 40 persons employed from this building. Entering the building, visitors are greeted in a reception area. Around two walls of the main floor are private offices of the Social Services Commissioner, case supervisors, senior caseworkers as well as a stenographer's office and adoption office.

In the center of the floor are 24 cubicles with movable partitions where caseworkers and assistants confer with recipients about individual problems.

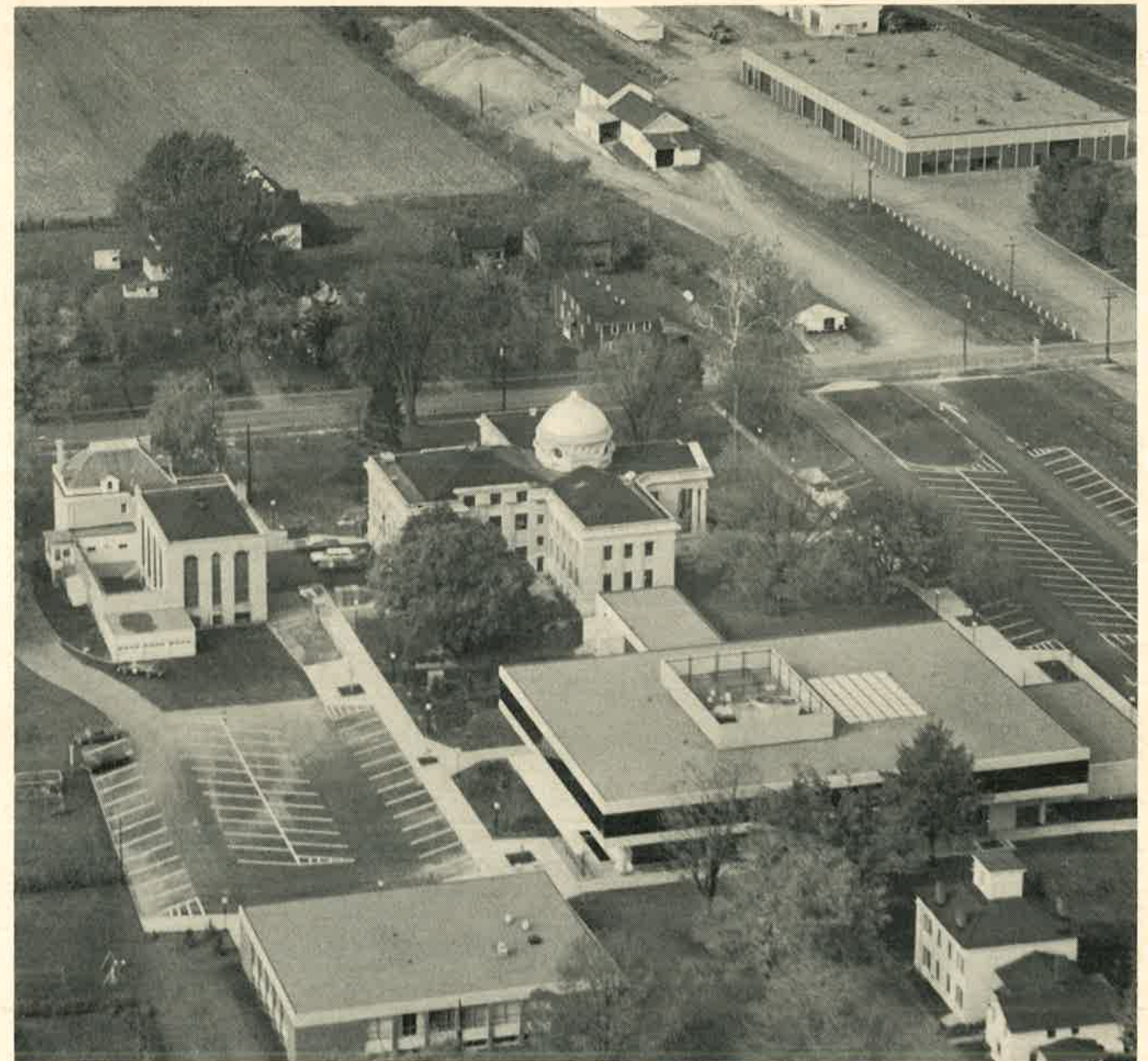
The basement floor is used for accounting, medical, storage, lunch room and Physically Handicapped Children's Department.

Meanwhile, construction was progressing simultaneously on the main Office Building which rises two stories above the full basement. It is faced with pre-cast concrete in limestone color harmonizing with the Courthouse and uses solar ban windows of bronze color.

A delicate heat-balance system where heat from people, lights and machines is captured and recirculated was installed to service all buildings. There is air conditioning in all buildings, carpeting in many areas and an elevator in the Office Building.

Movable partitions are used in the buildings to make future changing of office dimensions a simple, inexpensive matter as individual department functions increase or diminish.

The Office Building is connected to the Courthouse by an enclosed walkway.



Aerial view of complex; Social Services Building—lower left; County Jail—center left; Court House—center; new office building—lower center; new highway garage—upper right; historic John Wesley Coe home at lower right will be removed to make room for additional parking space.

In the basement are the Civil Defense offices and emergency operations center; tax assessing offices, record storage and data processing center.

The first floor has offices for the County Clerk and records, Motor Vehicle Department, Veterans' Agency, central services and information. The offices surround an open inner courtyard or plaza.

On the second floor are offices of the County Treasurer, Board of Supervisors, Election Commissioners, Civil Service Commission, County Planning Department, Mental Health, Public Health, County Attorney and Purchasing.

This building was completed in July, 1969 and was occupied by various departments in August, 1969.

A Dedication and Open House was held at the Office Building on November 9, 1969 with more than 1,000 persons on hand to tour the building, participate in the building acceptance ceremonies and placing of a time capsule in the cornerstone.

The entire Courthouse was vacated in early fall, 1969 to permit renovations of this building, constructed in 1910. These renovations were finished in February, 1970 and the building is now a separate Judicial Center.

In the basement are the Surrogate Clerk and records. On the ground floor are offices for two County level judges; a downstairs Courtroom, the

Continued on page 54

Madison County's Building Program

Continued from page 19

Probation Department and Family Court offices, plus space for Court Stenographers and attorneys.

On the upper floor are a Supreme Court office suite, District Attorney's offices, a small room for court proceedings, a large upper Courtroom and a new Central Jury Room. This is the first Central Jury Room in the Sixth Judicial District, and has facilities for 60 persons.



Supervisors' Chambers

An example of blending the old with the new may be seen in the upper Courtroom where the original leaded skylight was removed piece by piece, cleaned and replaced. The original brass lamps were removed, wired, polished and replaced.

Building coordinator Fisher in commenting on the extensive program Madison County has completed says, "we think we have as nice a County Seat setup as any County in New York State. All our services are centralized; we have room for future expansion within each of these buildings and we think they will meet our needs for many years to come."



Ground Floor Interior Courtyard

SAILING — FUNNING — FISHING

Home of the Black Bass

TOWN OF LYME

Gordon F. Torrey, Supervisor

Welcome to the

TOWN OF ORLEANS

Home of the Thousand Islands

Bridge and Gateway to Canada!

Welcome to the

TOWN OF PAMELIA

Everything for Business

and Industry.

Compliments of

THE

TOWN OF RUTLAND

Jefferson County