

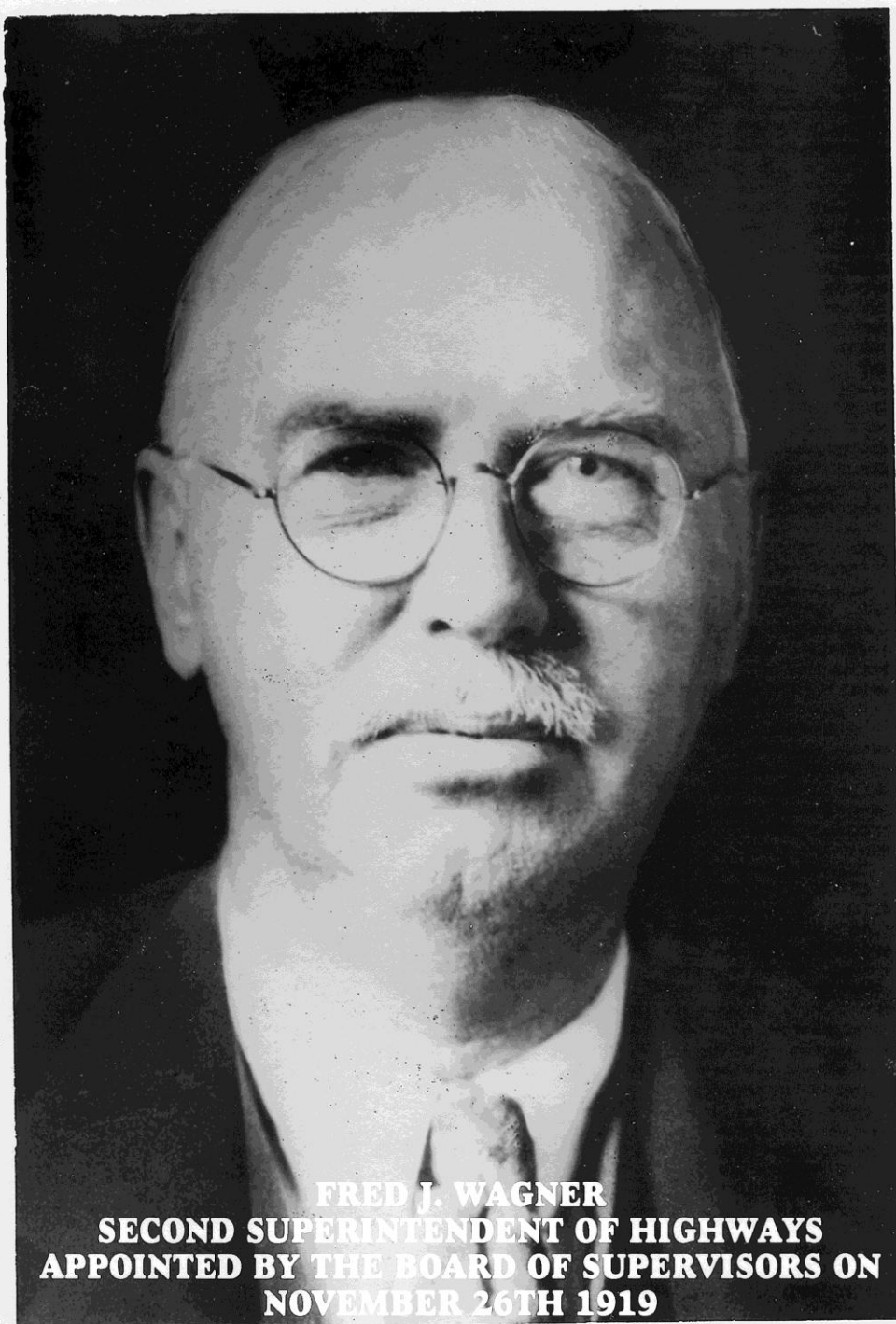
# Madison County Highway Department

Established 1909

# The Highway Superintendents

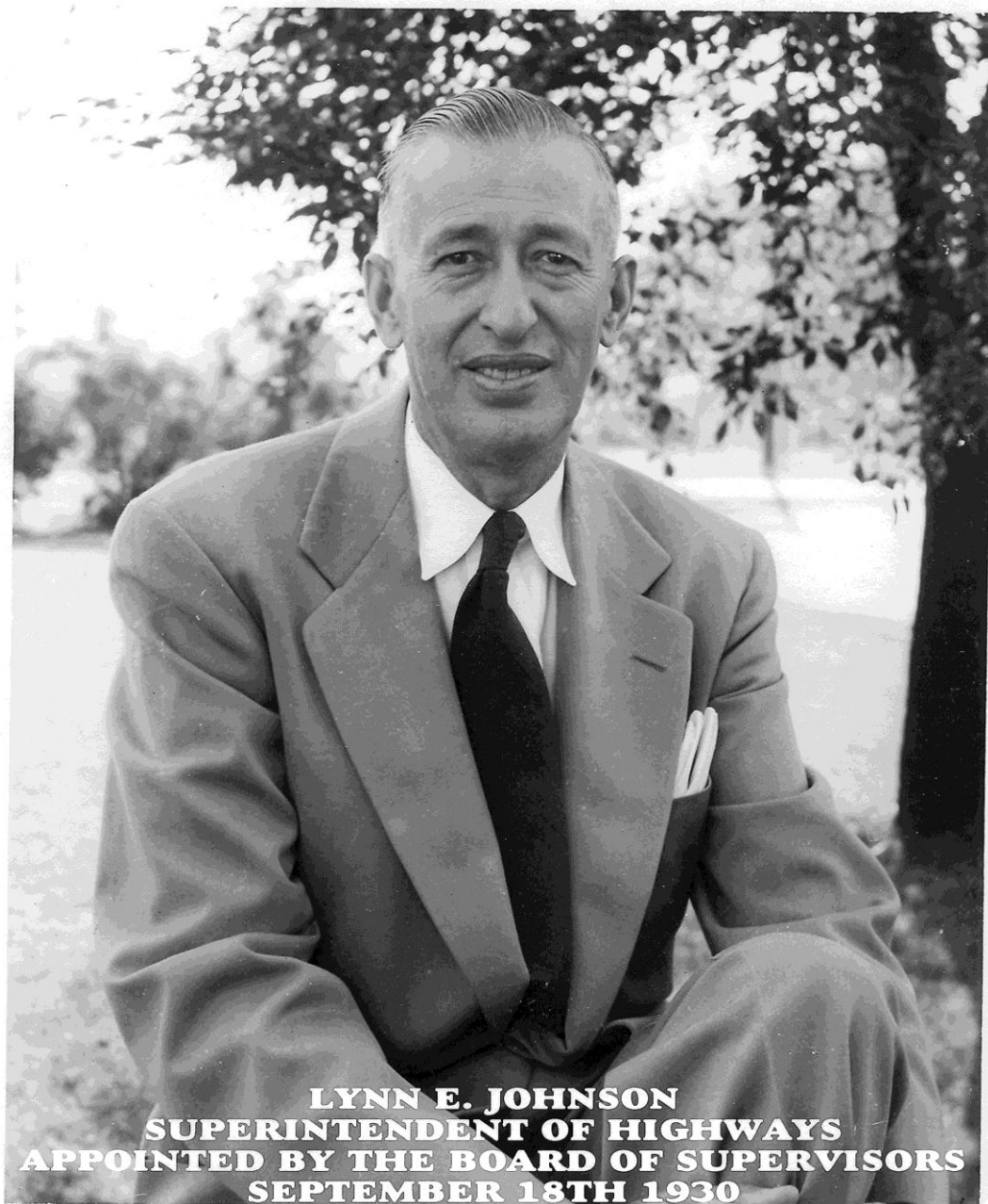


**GEORGE S. TIBBITTS  
FIRST SUPERINTENDENT OF HIGHWAYS  
APPOINTED BY THE BOARD OF SUPERVISORS ON  
APRIL 1ST 1909**



**FRED J. WAGNER**  
**SECOND SUPERINTENDENT OF HIGHWAYS**  
**APPOINTED BY THE BOARD OF SUPERVISORS ON**  
**NOVEMBER 26TH 1919**





**LYNN E. JOHNSON**  
**SUPERINTENDENT OF HIGHWAYS**  
**APPOINTED BY THE BOARD OF SUPERVISORS**  
**SEPTEMBER 18TH 1930**

Lyle H. Matteson  
Appointed Highway  
Superintendent by  
The Board of Supervisors  
1962  
(No Photo Available)



**DAVID F. GROSSMAN**  
**HIGHWAY SUPERINTENDENT**  
**APPOINTED BY THE BOARD OF SUPERVISORS**  
**MARCH 1973**





**JOSEPH M. SLIVINSKI**  
**HIGHWAY SUPERINTENDENT**  
**APPOINTED BY THE BOARD OF SUPERVISORS**  
**JANUARY 1981**



# Buildings & Equipment



**FIRST TRUCK OWNED BY THE MADISON CO. HIGHWAY DEPT.  
ALLOCATED TO THE DEPARTMENT BY THE FEDERAL GOVERNMENT  
IN 1921**



HEADQUARTERS

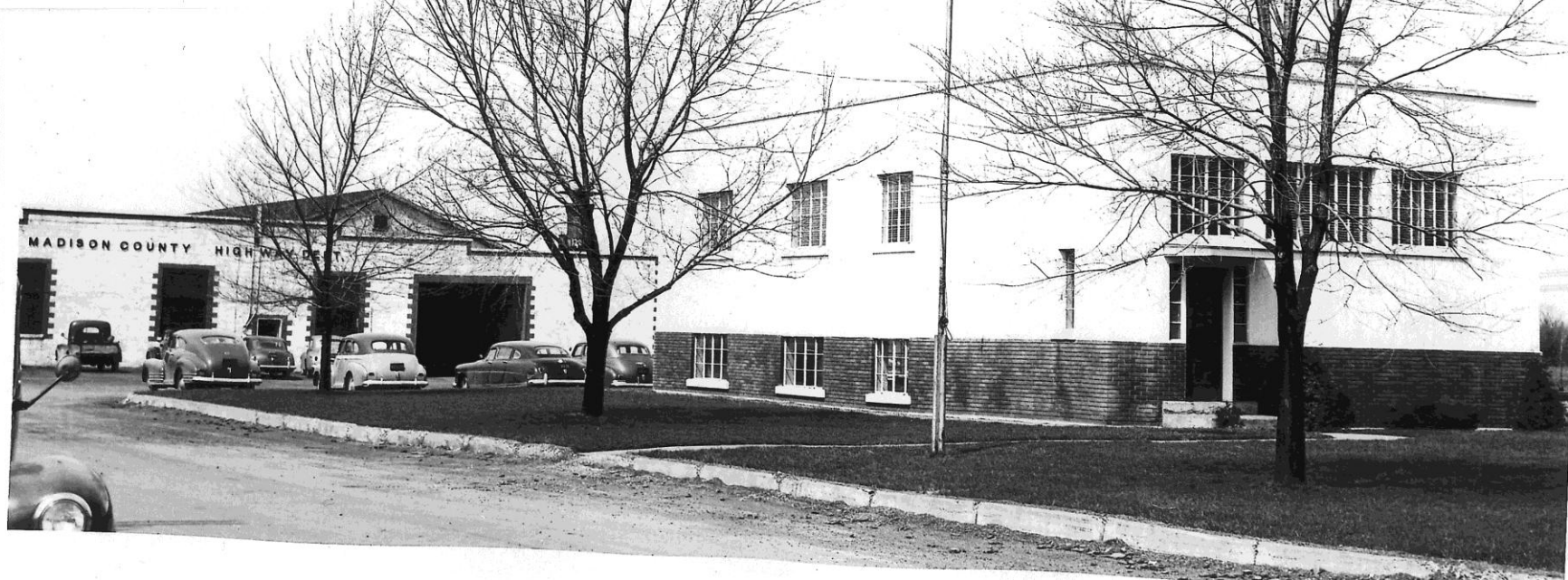
OF

MADISON COUNTY  
HIGHWAY DEPT.

WAMPVILLE, N. Y.

GENERAL OFFICE BLDG.  
AT RIGHT; WITH FRONT  
VIEW OF THE MAIN  
GARAGE AT THE LEFT.

BUILT IN 1938 & 1940







**HEADQUARTERS OF MADISON COUNTY HIGHWAY DEPT.  
SOUTHERN DIVISION AT MORRISVILLE, N.Y.  
BULT IN 1948**





**ONE OF THE TRUCKS PURCHASED BY MADISON CO. HIGHWAY DEPT.  
1960  
THE MOST MODERN TRUCKS FOR HIGHWAY MAINTENANCE  
PICTURED WITH TRUCK, JOHN COLBURN**



# WAMPSVILLE KITCHEN 1958





**AUTOMATIC TRAFFIC COUNTER  
DISPLAYED BY SUMNER GILL**

1953

# Snow Removal Equipment & Significant Snowfall



A black and white photograph of a large industrial shipyard. Several small, light-colored boats are lined up on stands, receding into the distance. The ceiling is high with a grid of structural beams and several hanging lights. On the left, a vehicle with a crane is partially visible. The floor is concrete with visible expansion joints.

# WAMPSVILLE DIVISION

1954





## **MORRISVILLE DIVISION**

**SNOW PLOWS/BAGS OF SALT**

1954






**QUARRY ROAD  
1938**

Valley County Department of Highway



**THE ROTARY BLADE "PENGUIN" STEAMING INTO DRIFTS ON THE LENOX FURNACE--CLOCKVILLE ROAD  
JANUARY 22, 1945**





**OPENING THE BINGLEY-PERRYVILLE ROAD  
FEBRUARY 6, 1945**



**WINTER OF 1947-48**



# Bridge Construction & Quarry







**OLMSTEAD ROAD BRIDGE CONSTRUCTION.  
OCT. 18TH 1949  
FOREMAN SCOTT COULTER ON EXTREME RIGHT**



MADISON COUNTY  
DEPARTMENT OF HIGHWAYS





**Eddy's gravel bed in regrading mile on the Buyea rd.  
July 2nd 1953**



Thanks to  
Ronald Walker,  
Madison County Highway Dept.,  
Building Maintenance Mechanic (Retired),  
For Collecting & Sharing These Photos